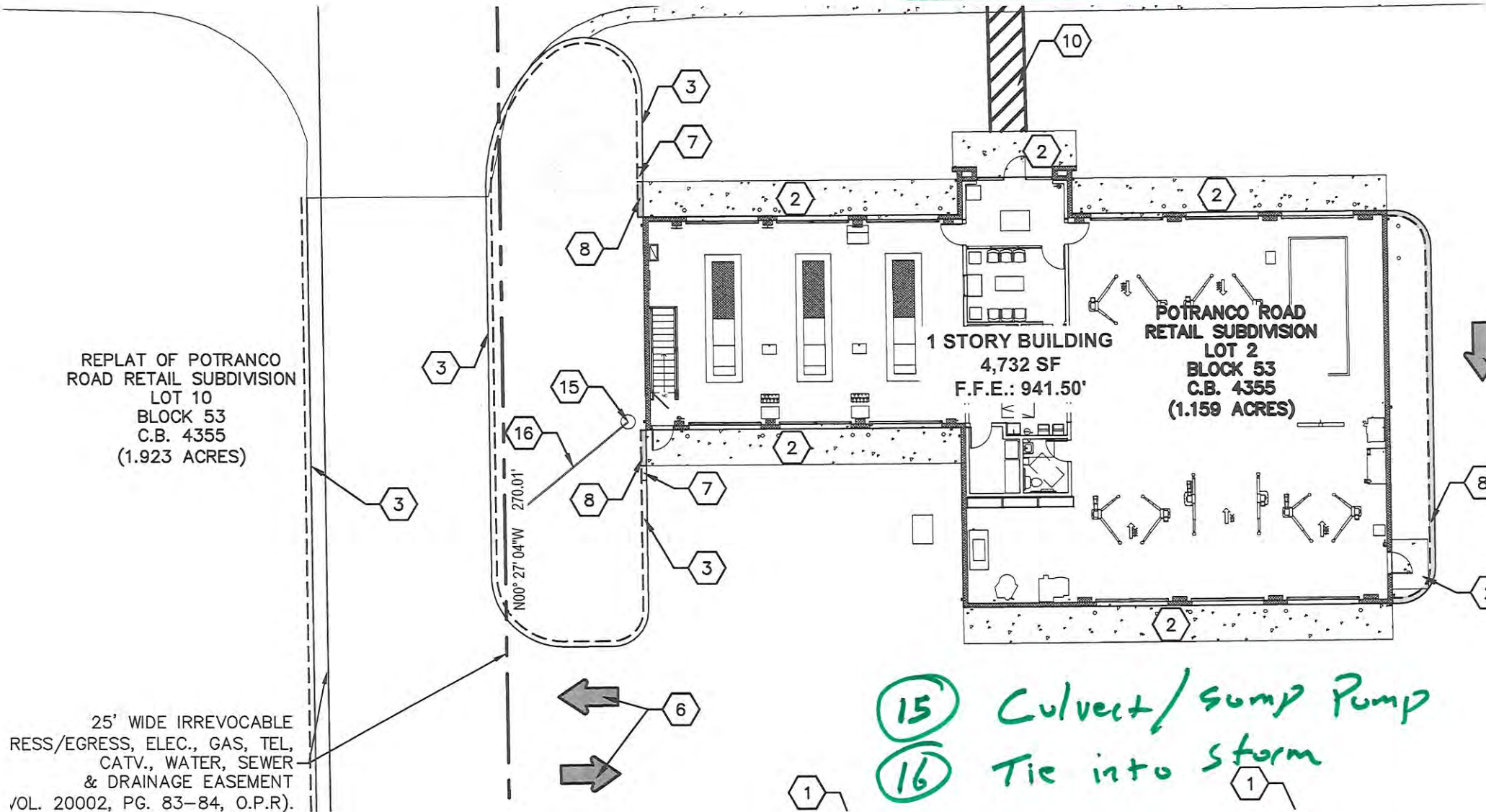
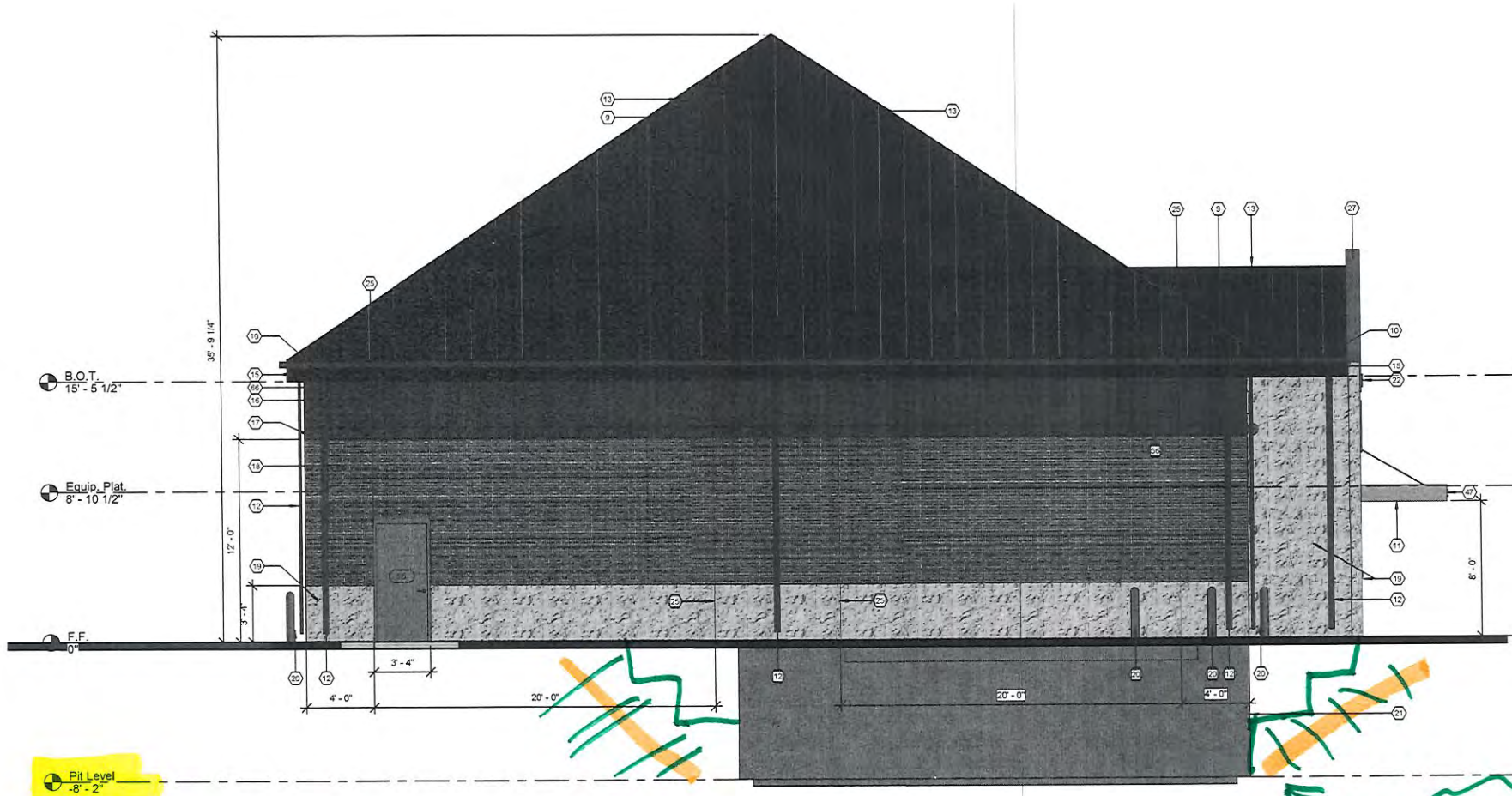


Example:





Example:

See Architectural Plans
 see Geotech Report
 Pit excavated soil for reuse.

Level -
 Excavate Pit
 OSHA Std.
 TYP.

Keynote Schedule	
Tag	Text
1	Attic Access (Werner Model WH2208)
2	Membrane waterproofing at perimeter of foundation wall as specified
3	Location of 30" wide refrigerator by others.
4	Robe hook mounted at 48" A.F.F., Bradley Corporation Model 915.
5	42" grab bar, Bradley Corporation Model 8120-00142. Provide blocking in wall as required.
6	Painted 1/2" thick plywood with 1 1/4"x1 1/4" wood batten strips at seams and secured to underside of roof trusses
7	1/2" gypsum board ceiling, painted
8	Exposed to structure above
9	Pre-finished standing seam metal roof system
10	Pre-finished metal gutter system
11	Pre-finished metal awning system. See details on sheet A303
12	Pre-finished metal downspout and elbow. Provide concrete splashblock at each downspout unless discharge is on concrete or asphalt.
13	Pre-finished hip and ridge cap. Color to match roof.
14	Metal valley flashing. Color to match roof.
15	1x pressure treated painted fascia board continuous
16	Painted structural half highs
17	Painted 8" split-faced grout filled "u" block bond beam. See Structural.
18	Unpainted structural half highs
19	Painted 8" split-face CMU
20	Painted concrete-filled steel bollard
21	Cast-in-place concrete wall (See Structural)
22	Signage by others. Provide blocking as required. See Electrical for power.
23	Wall sconce by others. See electrical for power. Provide blocking as required.
24	Lightbar by others. See electrical for power. Provide blocking as required.
25	Control joint. For control joints in concrete floor slabs, coordinate location with equipment layout by others. Max. distance between control joints in slabs not to exceed 12'-0". Control joints in walls shall be 4'-0" from wall intersection or corner and every 20'-0".
26	Key box (Locate as directed by the Local Fire Marshal or AHJ)
27	Pre-finished metal coping
28	Framed mirror, Bradley Corporation Model 780-02436
29	Automatic Towel Dispenser by others, Bradley Corporation Model 2494. Provide blocking in wall as required.
30	Wall mounted soap dispenser by others, Bradley Corporation Model 9563. Provide blocking in wall as required.
31	Jumbo Dual Roll Toilet Tissue dispenser by others, Bradley Corporation Model 5425. Provide blocking in the wall as required.
32	36" grab bar, Bradley Corporation Model 8120-00136. Provide blocking in wall as required.
33	ADA compliant room / exit sign.
34	4" perforated perimeter drain with filter fabric
35	Foundation sump lift station. Verify location with Civil and tie into Civil storm drain system, Model Zoeller M98. Or, approved comparable product.
36	Surface mounted baby changing station, Bradley Corporation Model 9631 Light Gray. Provided blocking in wall as required.
37	Lightbar by others. See electrical for power. Provide blocking as required.
38	Eyewash station (See Plumbing)
39	Provide attic draftstop partition and access door per IBC. Wall shall read "Seal All Penetrations" every 25'-0" o.c. Attic "Floor" area within draftstop areas shall not exceed 3,000 s.f. Draftstop materials shall not be less than 1/2" gypsum board adequately supported. The integrity of draftstop shall be maintained. Provide 1 opening per partition, protected by a self-closing door constructed as required for the partition with automatic latch. Door shall not be less than 20"x30" which is required for attic access specified in Section 1209.2 of the IBC. Provided max. 3,000 s.f. area is not exceeded, draftstop locations shall align with structural supports.
40	Underlayment guards
41	Paint structural steel at openings Safety Yellow. (Typical for pit openings and stairwell opening).
42	Paint all roof penetrations to match roof color.
43	24" vertical grab bar, Bradley Corporation Model 8120-00124. Provided blocking in wall as required.
44	Concrete apron, Coordinate with Civil.
45	Provide a 2" concrete walkway cap with non-slip surface over oil tanks (by others). Coordinate with equipment supplier prior to installation.
46	Oil tank stairs by others.
47	Provide address identification (as directed by the Local Fire Marshal or AHJ)
48	Painted concrete-filled steel pipe bollard located near gas meter.
49	Telephone back board. See Electrical.
51	Provide 20"x30" insulated attic access panel
52	Sign to be centered on wall horizontally. Align top of sign vertically where wall begins to pitch unless otherwise indicated. Junction box for sign shall be located in the center of the sign. Verify with sign company prior to rough-in
53	Conduit to be centered horizontally for lights in awning. Verify with sign company prior to rough-in.
54	Locate junction box for sconces 5'-0" a.f.f. vertically and 4" from center horizontally (Typical). Verify with sign company prior to rough-in.
55	Stainless steel corner guard.
56	Metal louver or vent. see Mechanical. Paint to match adjacent surface.
57	Transition strip.
58	Verify location and size of pit exhaust opening with Structural and Mechanical drawings.
59	Provide swing gate at stairs for fall protection. Gate to open in direction of egress. Provide signage that reads "Do Not Enter, Authorized Personnel Only".
60	Coffee cabinet (To be provided by GC).
61	Wall mounted T.V. by others. See Electrical for power, etc.
62	4" stainless steel chain rail by others.
63	Service Desk (To be provided by GC).
64	Roof Vent. Paint to match roof color. (See Mechanical)
65	Word Wall. Graphics by others. Use extreme bond primer.
66	Painted 2x frieze board



Express Oil Change & Tire Engineers
Single Building - Right Hand Oil Change

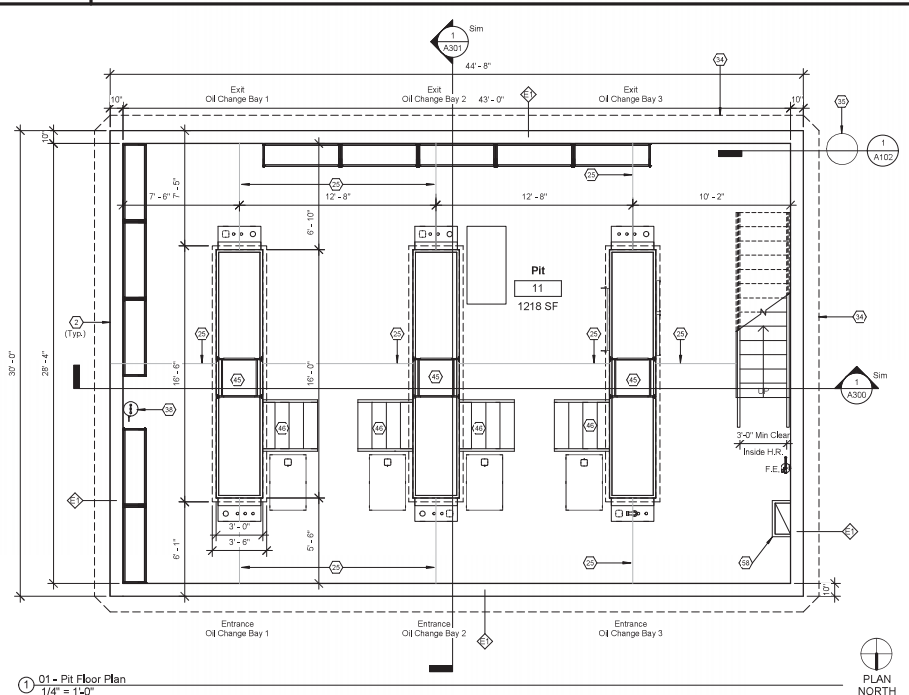
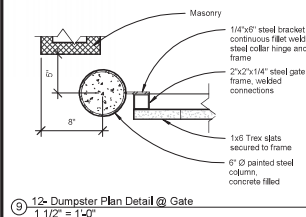
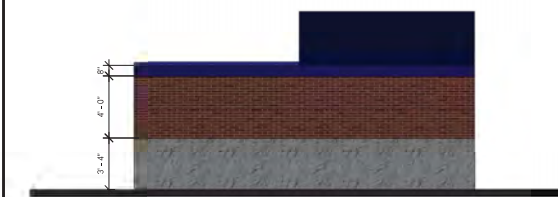
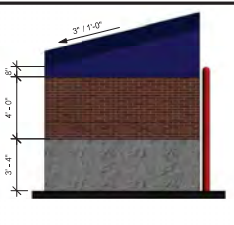
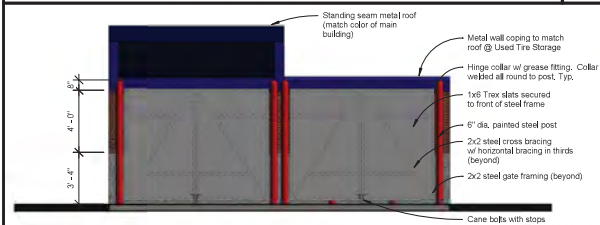
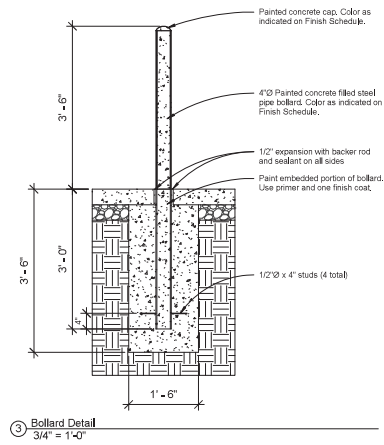
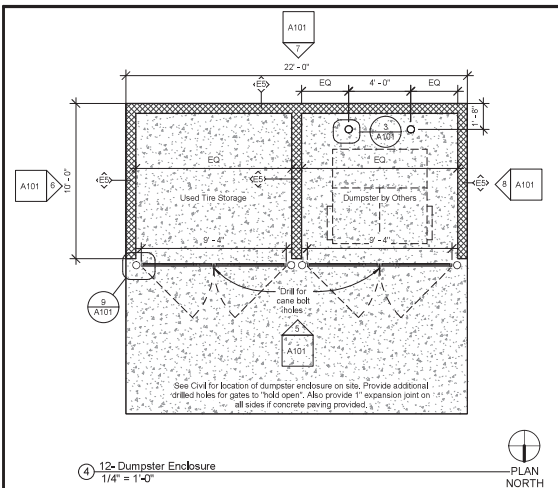
San Antonio, Texas


FINAL		
No.	Description	Date

© 2021 Aho Architects, LLC.
All Rights Reserved.

Keynotes

Project number	21042
Date	01/07/2022
Drawn by	ARC
Checked by	TAA
G101	
Scale	





Express Oil Change & Tire Engineers
Single Building - Right Hand Oil Change
San Antonio, Texas

FINAL

No.	Description	Date

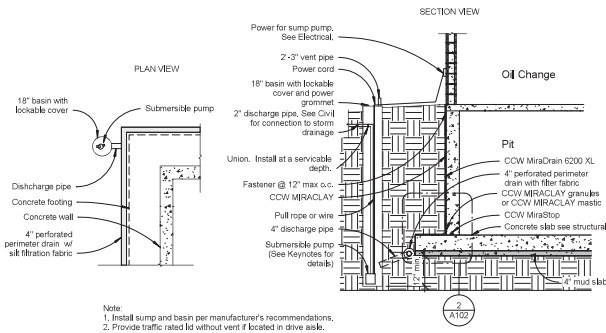
© 2021 Aho Architects, LLC. All Rights Reserved.

Pit Floor Plan and Site Details

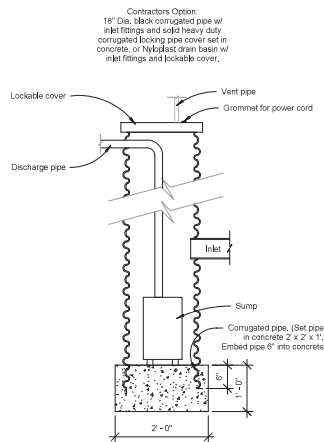
Project number	21042
Date	01/07/2022
Drawn by	ARC
Checked by	TAA

A101

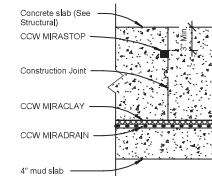
Scale: As indicated



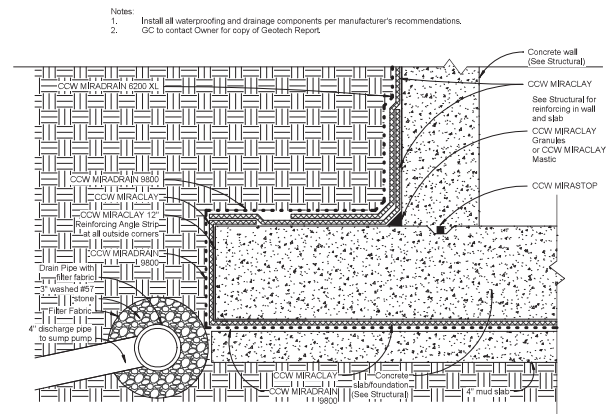
① Sump Pump Detail
1/4\" = 1'-0"



④ Sump Pump Pipe Section
3/4\" = 1'-0"



③ Foundation Construction Joint
1 1/2\" = 1'-0"



② Foundation Waterproofing
1 1/2\" = 1'-0"



Express Oil Change & Tire Engineers
Single Building - Right Hand Oil Change

San Antonio, Texas

FINAL

No.	Description	Date

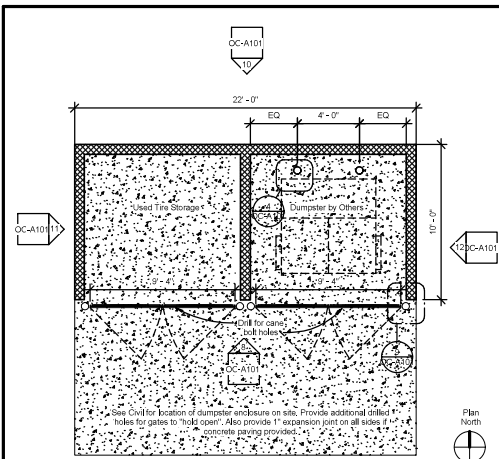
© 2021 Aho Architects, LLC.
All Rights Reserved.

Foundation Details

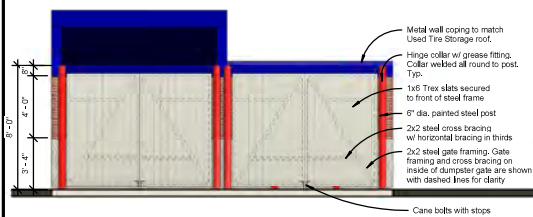
Project number	21042
Date	01/07/2022
Drawn by	ARC
Checked by	TAA

A102

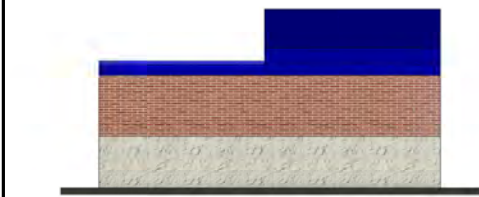
Scale: As indicated



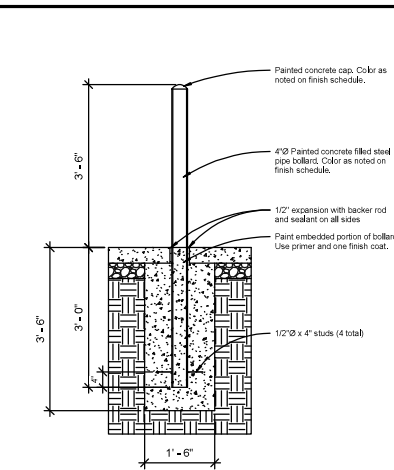
② 09 - Dumpster Enclosure Plan
1/4" = 1'-0"



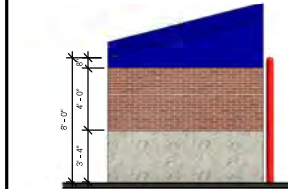
⑧ Dumpster Enclosure - Front
1/4" = 1'-0"



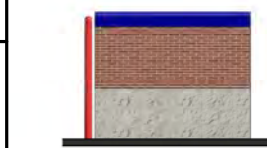
⑩ Dumpster Enclosure - Rear
1/4" = 1'-0"



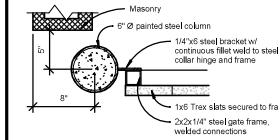
④ Bollard Detail
3/4" = 1'-0"



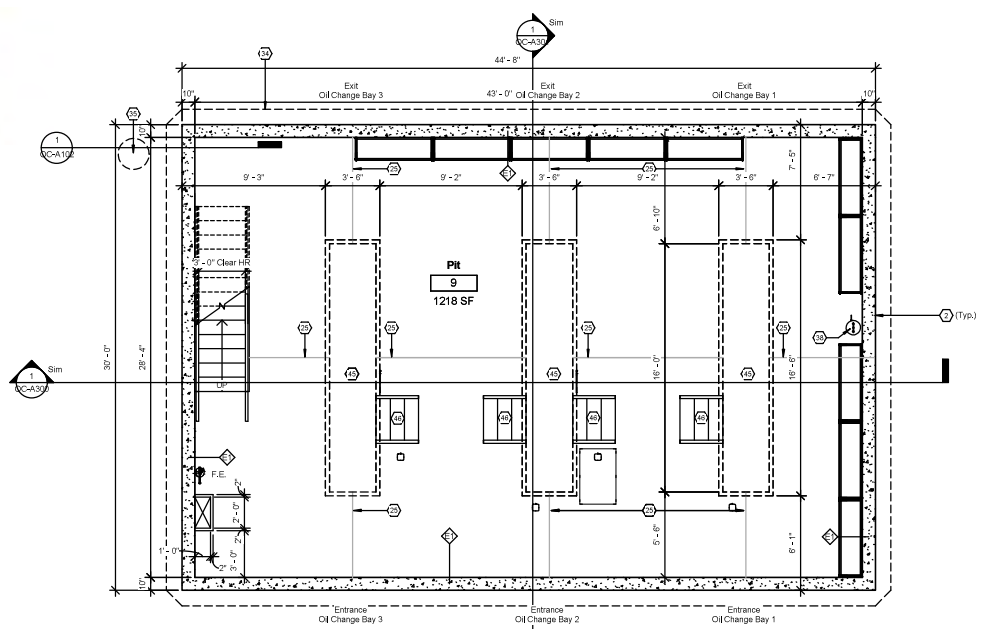
⑦ Dumpster Enclosure - Right
1/4" = 1'-0"



⑬ Dumpster Enclosure - Left
1/4" = 1'-0"

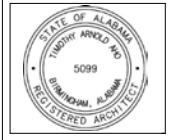


⑨ Dumpster Enclosure Detail
1 1/2" = 1'-0"



① 01 - Pit Floor Plan
1/4" = 1'-0"

See Structural for Dumpster Enclosure Section



Express Oil Change & Tire Engineers
Left Hand Oil Change Building
2101 Winchester Road NE
Huntsville, AL 35811

FINAL

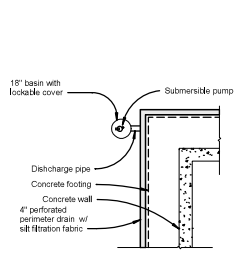
No.	Description	Date

© 2021 Aho Architects, LLC. All Rights Reserved.

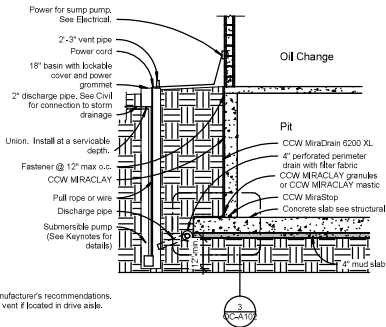
Pit Floor Plan and Site Details

Project number	21028
Date	09/14/2021
Drawn by	ARC
Checked by	TAA
Scale	As indicated

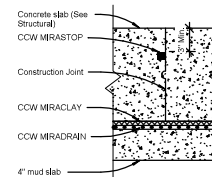
8/15/2021 10:11:55 AM



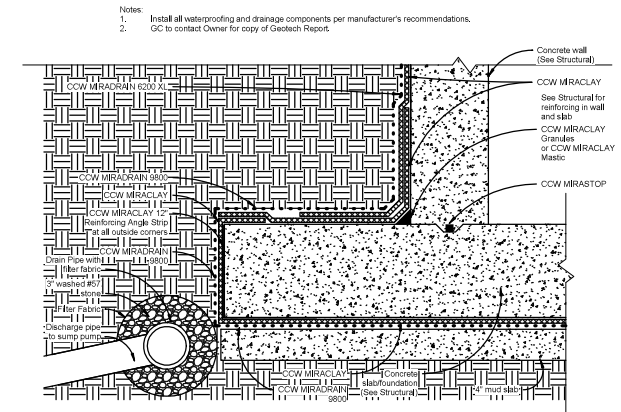
① Sump Pump Detail
1/4" = 1'-0"



① Sump Pump Detail
1/4" = 1'-0"



② Foundation Construction Joint
1 1/2" = 1'-0"



③ Foundation Waterproofing
1 1/2" = 1'-0"

2101 Winchester Road NE
Huntsville, AL 35811

FINAL

[illegible]

© 2021 Aho Architects, LLC.
All Rights Reserved.

Foundation Details

Project number	21028
Date	09/14/2021
Drawn by	ARC
Checked by	TAA

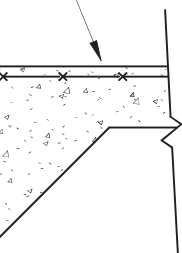
OC-A102

scale	As indicated
-------	--------------

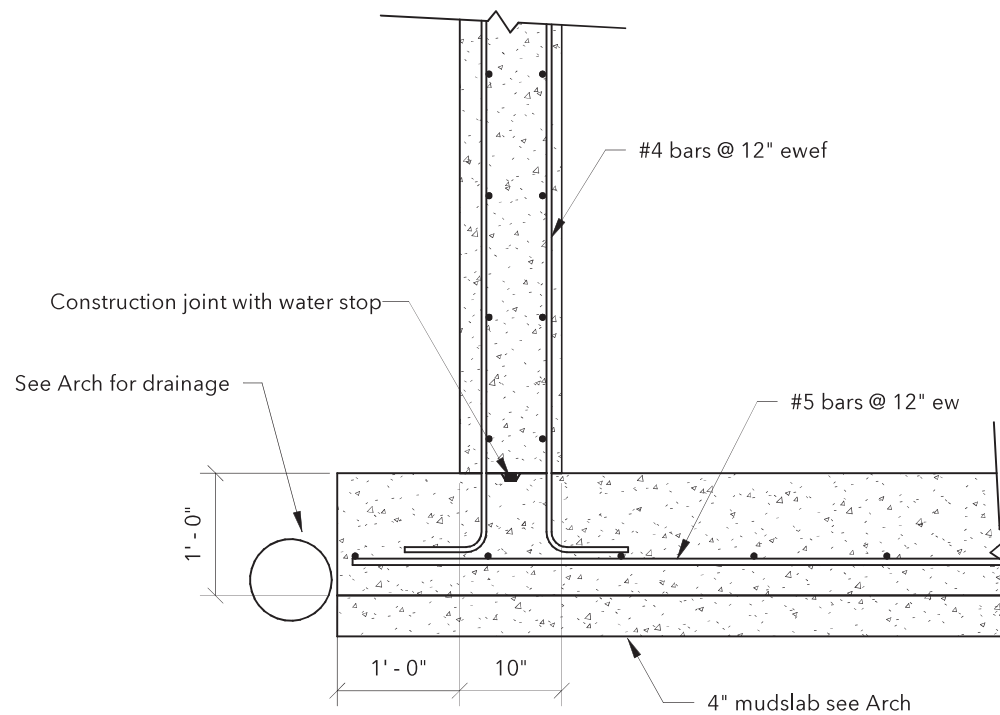
9/15/2021 10:11:56 AM

3" o.c.

e
f



top &
bottom
24"



Section 1

3/4" = 1'-0"

FINAL

No.	Description	Date

© 2022 Aho Architects, LLC.
All Rights Reserved.

Sections and Details

Project number 21042

Date 01/07/2022

Drawn by jcj

Checked by jd

S5.1

Scale 3/4" = 1'-0"